

**Operating manual**

**Puro® Thermal Direct Printer YP-DP1**



98627-000-25

Edition 1.0.0

03/05/2020

## **Foreword**

### **Must be followed!**

Any information in this document is subject to change without notice and does not represent a commitment on the part of Minebea Intec unless legally prescribed. This product should only be operated/installed by trained and qualified personnel. In correspondence concerning this product, the type, name, and release number/serial number as well as all license numbers relating to the product have to be cited.

### **Note**

This document is partially protected by copyright. It may not be changed or copied, and it may not be used without purchasing or written permission from the copyright owner (Minebea Intec). The use of this product constitutes acceptance by you of the abovementioned provisions.

## Table of contents

<b>1</b>	<b>Introduction.....</b>	<b>2</b>
1.1	Read the manual.....	2
1.2	This is what operating instructions look like.....	2
1.3	This is what lists look like.....	2
1.4	This is what menu items and softkeys look like.....	2
1.5	This is what the safety instructions look like.....	2
<b>2</b>	<b>Safety instructions.....</b>	<b>4</b>
2.1	General safety information.....	4
2.2	Incoming goods inspection.....	4
2.3	Before operational startup.....	4
<b>3</b>	<b>Setup instructions.....</b>	<b>5</b>
3.1	Printer overview.....	5
3.2	Operation specification.....	5
3.3	Self test.....	5
<b>4</b>	<b>Dimensions.....</b>	<b>7</b>
4.1	Paper Size.....	7
<b>5</b>	<b>Installation.....</b>	<b>8</b>
<b>6</b>	<b>Connection.....</b>	<b>9</b>
6.1	Power supply.....	9
6.2	Data interface.....	9
<b>7</b>	<b>Specifications.....</b>	<b>10</b>
7.1	Equipment supplied.....	10
7.2	Technical data.....	10
<b>8</b>	<b>Replacing paper roll.....</b>	<b>11</b>
<b>9</b>	<b>Disposal.....</b>	<b>12</b>

# 1 Introduction

## 1.1 Read the manual

- Please read this manual carefully and completely before using the product.
- This manual is part of the product. Keep it in a safe and easily accessible location.

## 1.2 This is what operating instructions look like

- 1. - n. are placed before steps that must be done in sequence.
- ▶ is placed before a step.
- ▷ describes the result of a step.

## 1.3 This is what lists look like

- indicates an item in a list.

## 1.4 This is what menu items and softkeys look like

[ ] frame menu items and softkeys.

**Example:**

[Start]- [Applications]- [Excel]

## 1.5 This is what the safety instructions look like

Signal words indicate the severity of the danger involved when measures for preventing hazards are not followed.

### **DANGER**

#### **Warning of personal injury**

DANGER indicates death or severe, irreversible personal injury which will occur if the corresponding safety measures are not observed.

- ▶ Take the corresponding safety precautions.

### **WARNING**

#### **Warning of hazardous area and/or personal injury**

WARNING indicates that death or severe, irreversible injury may occur if appropriate safety measures are not observed.

- ▶ Take the corresponding safety precautions.

### **CAUTION**

#### **Warning of personal injury.**

CAUTION indicates that minor, reversible injury may occur if appropriate safety measures are not observed.

- ▶ Take the corresponding safety precautions.

**NOTICE****Warning of damage to property and/or the environment.**

NOTICE indicates that damage to property and/or the environment may occur if appropriate safety measures are not observed.

- Take the corresponding safety precautions.
- 

**Note:**

User tips, useful information, and notes.

---

## 2 Safety instructions

### 2.1 General safety information

- The equipment may only be used as intended for printing tasks.
- Observe the operating limits of the device.
- Position the device so that the power plug is freely accessible and the power cord does not present an obstacle or trip hazard.
- Unplug the power cord from the mains supply before cleaning.
- Make sure that no liquid enters the equipment.

### 2.2 Incoming goods inspection

The shipment must be checked for completeness. A visual inspection must be performed to determine if the shipment has been damaged. If there are grounds for a complaint, this must be brought to the attention of the delivery company immediately. A Minebea Intec sales or service point must be informed.

The shipment must be checked for completeness. A visual inspection must be performed to determine if the shipment has been damaged. If there are grounds for a complaint, this must be brought to the attention of the delivery company immediately. A Minebea Intec sales or service point must be informed. Visit our website <http://www.puroscales.com> or contact your dealer.

### 2.3 Before operational startup

#### **NOTICE**

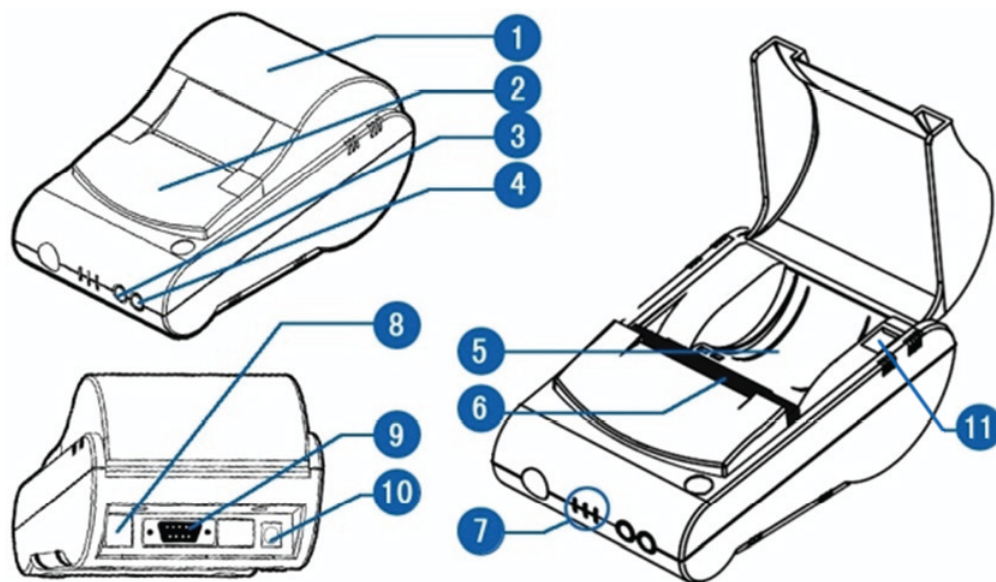
#### **Perform visual inspection.**

Before operational startup as well as after storage or transport, inspect the product visually for signs of mechanical damage.

- The product may not be put into operation if it has visible damage and/or is defective.

## 3 Setup instructions

### 3.1 Printer overview



1	Paper case cover
2	Panel
3	SEL button
4	LF button
5	Paper case
6	Printer head
7	Indicator light
8	Reserve case
9	Interface connector RS232
10	Power connector
11	ON/OFF Switch

### 3.2 Operation specification

After turning on the printer, the indicator light is on, shows that the printer is online, and it is ready to receive data.

The light is off, shows that the printer is offline, and it can not receive data.

When the light flash to show the paper is lacking, and the printer can not receive data.

The SEL button can switch online or offline status.

When the printer is offline, press the LF button, and the printer will feed paper.

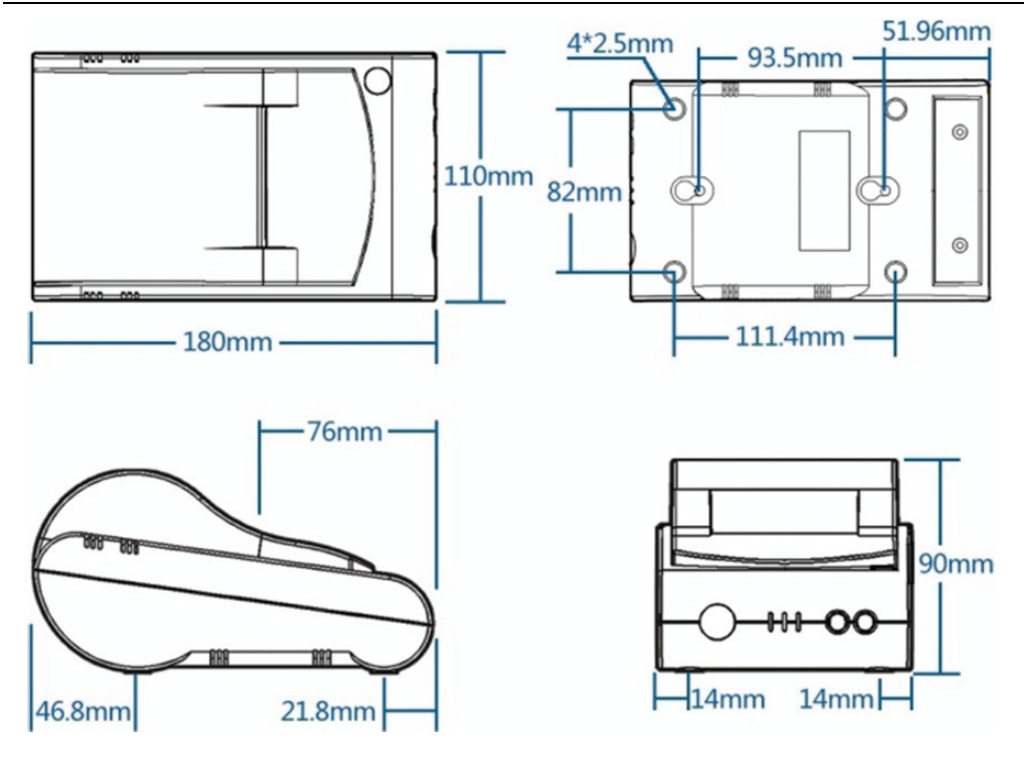
### 3.3 Self test

Turn on the printer, press the SEL button to make printer offline (when use new dot matrix printing and thermal printing model, no need to

refer this step), press the LF button, and don't release, then press the SEL button, and then release the both two buttons at the same time, and then the printer will print out the self-check scrip.



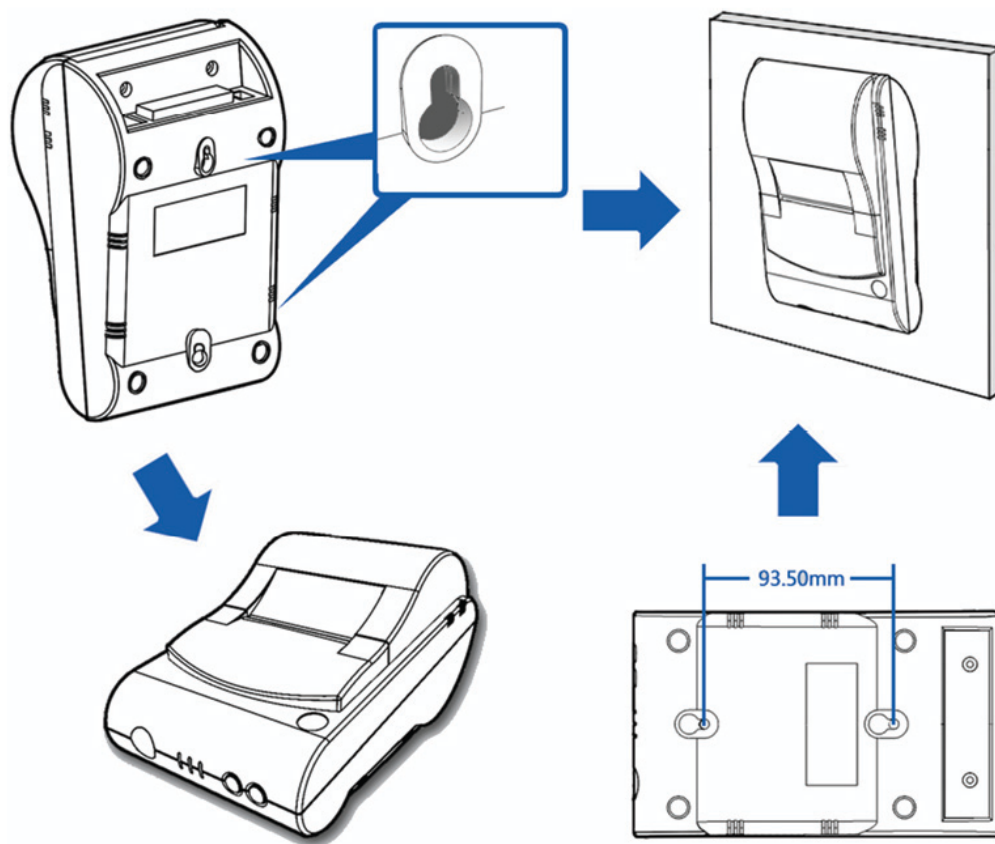
4 Dimensions



4.1 Paper Size

Paper Type	Thickness	Width	Diameter
Thermal Paper	0.06-0.08 mm	57±0.5 mm	max. 50 mm

## 5 Installation



1. Drill two mounting holes in the desired position at a distance of 93.5 mm.
2. Fix two screws on the equipment.
3. Hang the printer on the equipment.

## 6 Connection

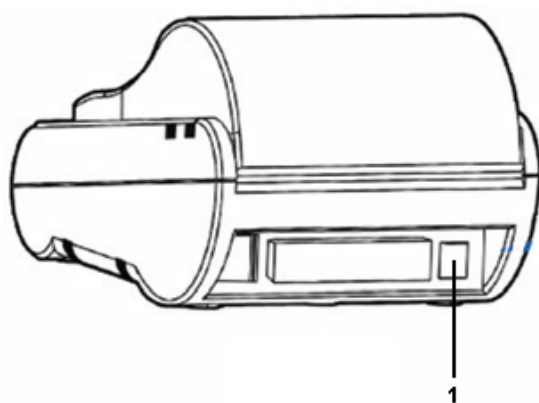
### 6.1 Power supply

#### **WARNING**

##### **Warning of hazardous area and/or personal injury**

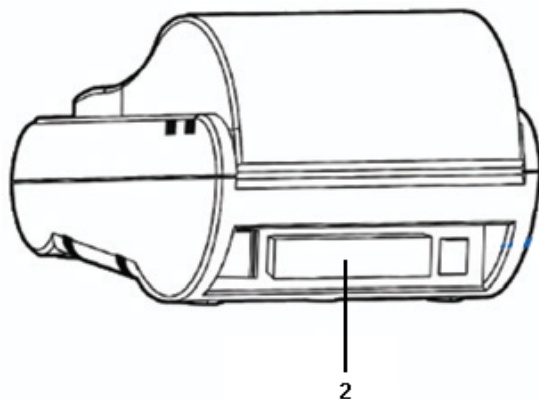
Incorrect supply voltage.

- It is essential that the power supply provided is used under all circumstances.



Power connector (1)

### 6.2 Data interface



Interface connector (2)

Use the supplied connecting cable YP-CAS1.

## 7 Specifications

### 7.1 Equipment supplied

No.	Position
1	YP-DP1 Printer
2	Safety Instructions with QR-code with access to detailed documentation
3	Connecting cable YP-CAS1
4	Power supply unit

### 7.2 Technical data

Item	Specification
Printing method	Direct thermal line printing
Paper width	57 mm
Resolution ration	8 dots/mm (384 dots/line)
Character per line	64/32/24
Printing speed	50 mm/sec (when the utilisation rate is 25%)
Character size	6x8 dots, 8x16 dots, or 12x24 dots
Chinese character library	GB2312, 16x16 dots, or 24x24 dots
Paper supplied	57 mm wide, 50 mm Ø
Interface	RS232
Operating temperature (°C)	5...50
Storage temperature (°C)	-20...60
Operating humidity (%)	10...80
Storage humidity (%)	10...90

## 8 Replacing paper roll

### ⚠ CAUTION

#### **Warning of personal injury.**

Print head may be hot!

- Allow the print head to cool down before replacing the paper roll.



1. Open the paper cover.
2. Insert the axis through the paper roll and place the axis with the paper roll in the slot into the printer. Pull out a small amount of paper and insert the paper into the feeder, according to Fig. 2.  
Notice the direction of the paper when using thermal series, according to Fig.1.
3. Power the printer on, press SEL button, make SEL indicator light off, then press LF button, make the print head to run, and the paper will come out, according to Fig. 3.
4. Press SEL button again or turn off the power.
5. Close the paper cover, according to Fig. 4.

## 9 Disposal

If the packaging is no longer required, please take it to your local waste disposal facility and/or a reputable disposal company or collection point. The packaging largely consists of environmentally friendly materials which can be used as secondary raw materials.

It is not permitted—even for small businesses—to dispose of this product with the regular household waste or at collection points run by local public waste disposal companies.

EU legislation requires its Member States to collect electrical and electronic equipment and dispose of it separately from other unsorted municipal waste so that it can then be recycled.

Before disposing of or scrapping the product, any batteries should be removed and taken to a suitable collection point.

Please see our T&Cs for further information.

We reserve the right not to accept products that are contaminated with hazardous substances (ABC contamination) for repair.

Published by

Minebea Intec Bovenden GmbH & Co. KG | Leinetal 2 | 37120 Bovenden, Germany

Phone: +49.551.309.83.0 | Email: [info@minebea-intec.com](mailto:info@minebea-intec.com)

[www.minebea-intec.com](http://www.minebea-intec.com)

